



Automatic Soap Foam Dispenser



Description:

Part Name: Automatic Soap Foam Dispenser

Model: ZYP450 (LED:two foam settings)

LOGO: **Free** custom (>90 pcs)

Size:3.8*4.8*7.7 inches/97*123*196(h)mm

Box size:5.2*4.1*8 inches/133*104*204 (h) mm

Material: 100% Virgin ABS Engineering Plastic

Machine Weight: 1.0 IB/450g

Gross Weight:1.15 IBS/520g

Capacity: 16oz/450ml

Color: Silver/Golden

Power supply: 4Pcs AA batteries



Automatic Soap Foam Dispenser



Part Name: Automatic Soap Foam Dispenser

Model: ZY450(NO LED)

Dispensing time:0.26 s

Foam Pump:0.014oz-0.028oz / 0.4-0.8ml

Inductive distance:<3.9 inches / <10 cm

Function:Liquid/Foam /Gel

Placement: Wall mounted with screw /Standing

Warranty:1 years

Package:30pcs/ctn

Carton size:21.8*16.7*16.7inches /55.5*42.5*42.5mm ,
37.5lbs/17kg



Instruction for ZYP450

Variable dispense control soap volume by adjust switch to control the liquid volume

First gear: Automatic foaming

Second gear: output foam for 2s

Check volume at a glance





Automatic Soap Foam Dispenser



Part Name: Automatic Soap foam Dispenser

HIGH PRECISION SENSOR- Automatic soap dispenser uses the latest infrared automatic induction technology that fast foaming speed at 0.26 seconds.

WIDE COMPATIBILITY- Foaming soap dispenser is compatible with foaming hand soap or hand sanitizer. Foam hand soap is recommended for better results. To dilute a normal liquid soap, a 1:3-6 soap ratio to water is recommended. 450ml/16oz capacity with visible volume, check volume at a glance.

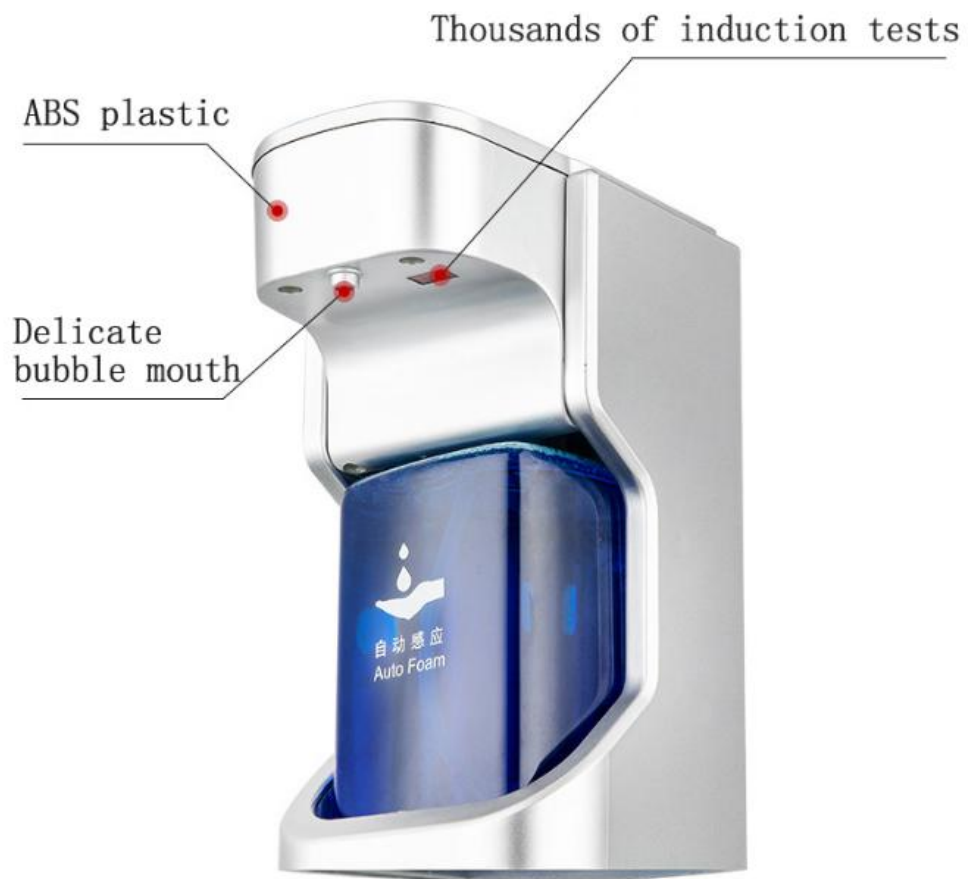
ENERGY-SAVING & EASY-OPERATION- Foaming soap dispenser uses the newest version foaming motor which is low power consumption. Just powered by 4*AAA batteries, can long standby for about 6 months.

HYGIENE- Touchless soap dispenser is made of ABS material, not only prevent bacterial transmission and cross-contamination but are very environmental which suitable for children and encourage children to wash their hands regularly. Great for use in bathroom, kitchen, office and more!

EASY TO CLEAN- Automatic soap dispenser with IPX3 waterproof design can be wiped with damp towel, but don't flush the unit with strong flowing water and put it upside down.



Instruction for ZYP450



Direct flushing
Can't be washed clean well



Soap hand washing
Susceptible to cross infection



Compressed hand sanitizer
Dirty hand contact contamination



Instruction for ZYP450

After-sale service

1. This product handpiece is free of charge during one year.
2. If required, please cut out and fill in the warranty the information and then send it back to the company together with the nozzles.



Warranty Card

The name of customer		The name of product	
The phone of customer		The model of product	
The address of customer			
Date of purchase		Dealer stamped	

101.00 mm

SENSOR
FOAM SOAP DISPENSER

Model No.: AW-001

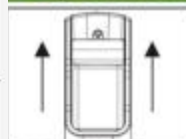


Instruction manual (Please read carefully before usage)

Thanks for your choosing this product, wish you a happy life!

130.00 mm

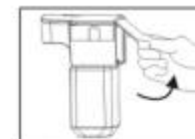
一. Operation methods



1. Pull the machine up

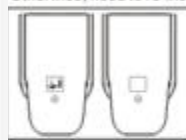


2. Unscrew the bottle in the direction as shown

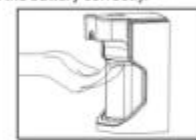


3. Lift the battery cover outward and install 4 pieces AA battery

Note: The LCD backlight flashes when the battery is installed correctly. Otherwise, need to re-install the battery correctly.



4. Turn on: Touching the "ON" for 3 seconds, LCD blue light flashing on off. Touching the "ON" for 3 seconds, LCD blue light turn off

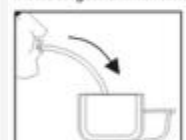


5. Running test- Liquid crystal display (LCD) is emitted as your hand reaches the inductive zone range of the drip. LCD starts the motor with blue-ray, and the machine works normally when motor has a sound.



6. Running test- Fill in a little water, turn on to test if water came out, and then turn off, repeat it 10 times.

Note: There are two gears for per drop dosage spray once or twice. It default gear 2 when turn on, adjust the dosage between gears 1 and 2 by touching the switch.



7. When testing water, if the water cannot be pumped out, you can blow into the straw, feel blown through and then use water to test the water again.



8. Fill in the foam hand sanitizer directly into the empty bottle for use: Several operations are required for the first time until the foam is ejected normally.

Note: If you use general hand sanitizer, please refer to general hand sanitizer usage.

二. Application of Handwashing Liquid in Machine

1. Use of common hand sanitizers:

Note: If you use normal hand sanitizer, recommend fill only 300ml. Fill in 100ml hand sanitizer shaking, and then mix 100-200ml water and shaking again.



2. The machine is recommended to use foam hand sanitizers:



Dew foam hand sanitizer



Willus foam hand sanitizer



Blue-moon foam hand sanitizer

三. Installation of products

Nail installation



1. Secure the base with screw



2. Hang up the hand washing machine for use.

四. Important

1. Do not stop up the nozzle with a hand or foreign body. (Figure 1)
2. Do not place upside down if the bottle fill in hand sanitizer. (Figure 2)
3. Do not soak the machine in water completely. (Figure 3)
4. Use 4pcs AA batteries,
5. When filling the hand wash, avoiding any object drop into the bottle. Please clean the straw if the dispenser don't working.
6. Please fill in the hand wash in time when it's run out of.
7. Replace the battery when the LCD displays power off. (Figure 4) Replace battery



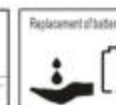
(Figure 1)



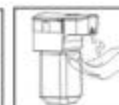
(Figure 2)



(Figure 3)



(Figure 4)



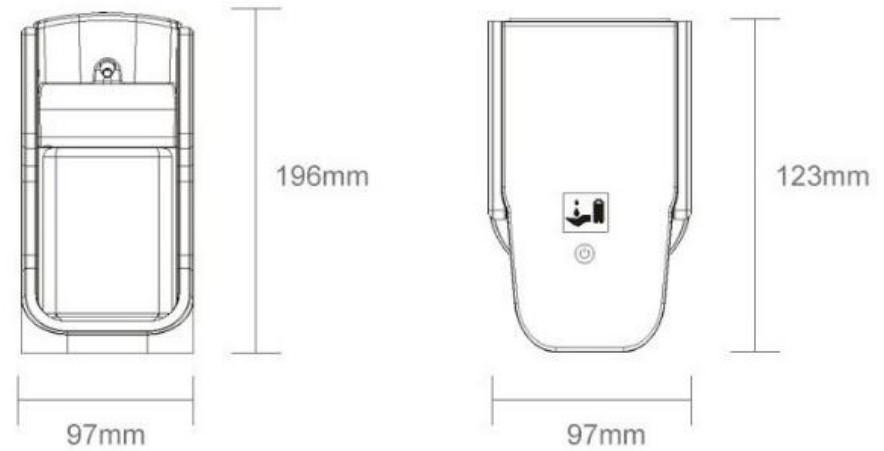


Packaging :



NOTE:

- ▶ Don't fasten the joint between the bottle and the machine too firmly!
- ▶ If you pour thick liquid, please add proper diluted water to ensure normal discharge.
- ▶ When used in strong light environment may cause Infrared sensors to malfunction
It is such a great gift for your family!
- ▶ The Automatic Soap Dispenser can keep away from bacteria, live a healthy life with your family!





Application: Apply to any cleaning product

